



Bolphane® BE

Centerfolded standard multipurpose polyolefin shrink film

- **Versatility.**
- **Optimized pre-perforation for controlled shrinkage and easier set-up.**
- **Strong shrink force for copacking applications.**
- **Good optical properties.**

APPLICATIONS

→ Bolphane BE is the standard film covering a broad spectrum of applications where a centerfolded film is required.



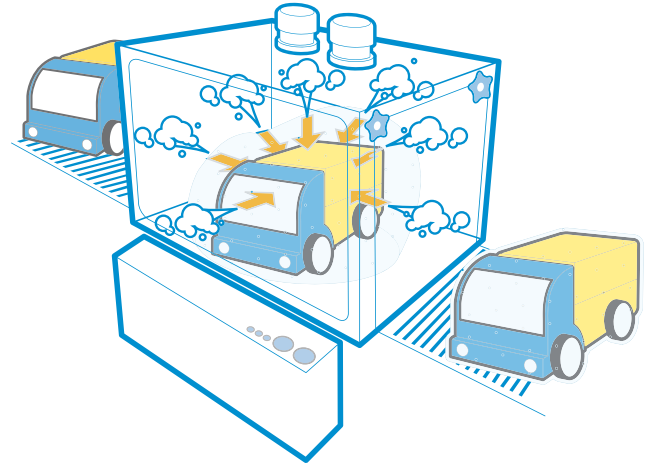
→ Its strong shrink force makes it a good candidate for multipacking applications.



Bolphane® BE

PRE-PERFORATION

- The optimized pre-perforation of Bolphane BE allows a controlled escape of air during the shrink stage and makes the set-up easier: no more need for perforation on the shrinkwrapper.



TECHNICAL FEATURES

PROPERTIES	BE 13	BE 15	BE 19	BE 25
Gloss (85° angle) in %	118			
Haze (%)	2,5			3
Shrinkage (%)	at 200° F			
	at 250° F			
Seal strength (g/inch)	1 600	2 000	2 100	2 300
WVTR (gms/100 sq.in./24 hrs at 95 % HR, 95° F)	1	0.9	0.7	0.5
O ² permeability (cc/m ² /24hrs at 73° F, 1 atm)	8 500	7 000	5 500	4 000
Roll Length (feet)	5 085	4 380	3 510	2 625
Core Internal Diameter (inch)	3			
Nominal Roll outside Diameter (inch)	9 1/2			

PRESENTATION

- Bolphane BE is available only centerfolded. Available widths : from 6" to 28" included, by increment of 1".

FOOD CONTACT APPROVAL

- Bolphane ®BE complies with U.S. Food and Drug Administration (FDA) regulation 21 CFR 177.1520-olefin polymer, allowing use for articles that contact food, except for articles used for packing or holding food during cooking.

PALLETIZING

WIDTH	ROLLS/PALLET
6"-18 "	24
19"-28"	12

RECYCLING



- Bolphane ® BE is fully recyclable in the LDPE waste stream (SPI code 04)

Bolloré